

# LonHand Series Product Specification

## USR-WM1

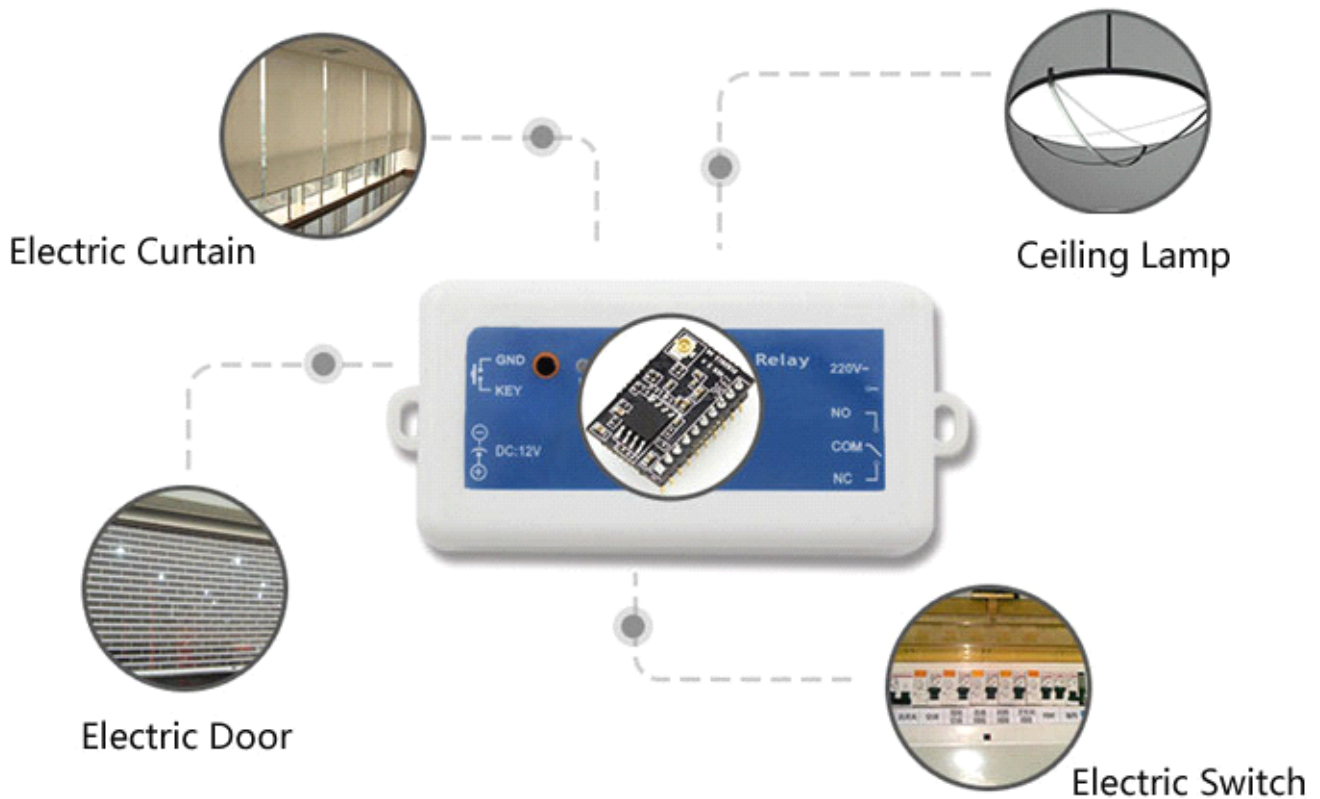
Ver: V1.3.1



## Contents

1 Quick start.....	3
1.1 Direct Connect Control.....	5
1.2 Local Lan Control.....	7
1.3 Remote control.....	9
2 Product Introduction.....	12
2.1 Product Description.....	12
2.2 Product features.....	12
2.3 Hardware specifications.....	12
2.4 Indicator and Key Function Introduction.....	13
2.5Usrlink Instructions.....	14
2.6 Timing Function Instruction.....	14
2.7 Restore Factory Defaults.....	16
2.8 Wiring Schematic Drawing.....	16
3 Directions for Use.....	17
3.1 Hardware Instructions.....	17
3.2 Connect the wireless router.....	17
3.21 UsrLinke configuration process.....	17
3.22 Webpage configuration process.....	23
4 LonHand of Windows Introduction.....	28
Contact Information.....	32
Disclaimer.....	32
Update History.....	32

## 1 Quick start



Preparation :

1. Supply power to USR-WM1:

Working voltage	WM1s : DC 6~24V or DC 5V WM1h: AC 110V/220V 60Hz/50Hz or DC12V
-----------------	---

**Note:**

**When use the WM1h's external key interface, do not touch the external leads, to avoid the risk of electric shock!**

2. Download and install LonHand software into your mobile phone

As for IOS system, search for "LonHand" in app store to download and install. Also you can scan the below two-dimensional code.

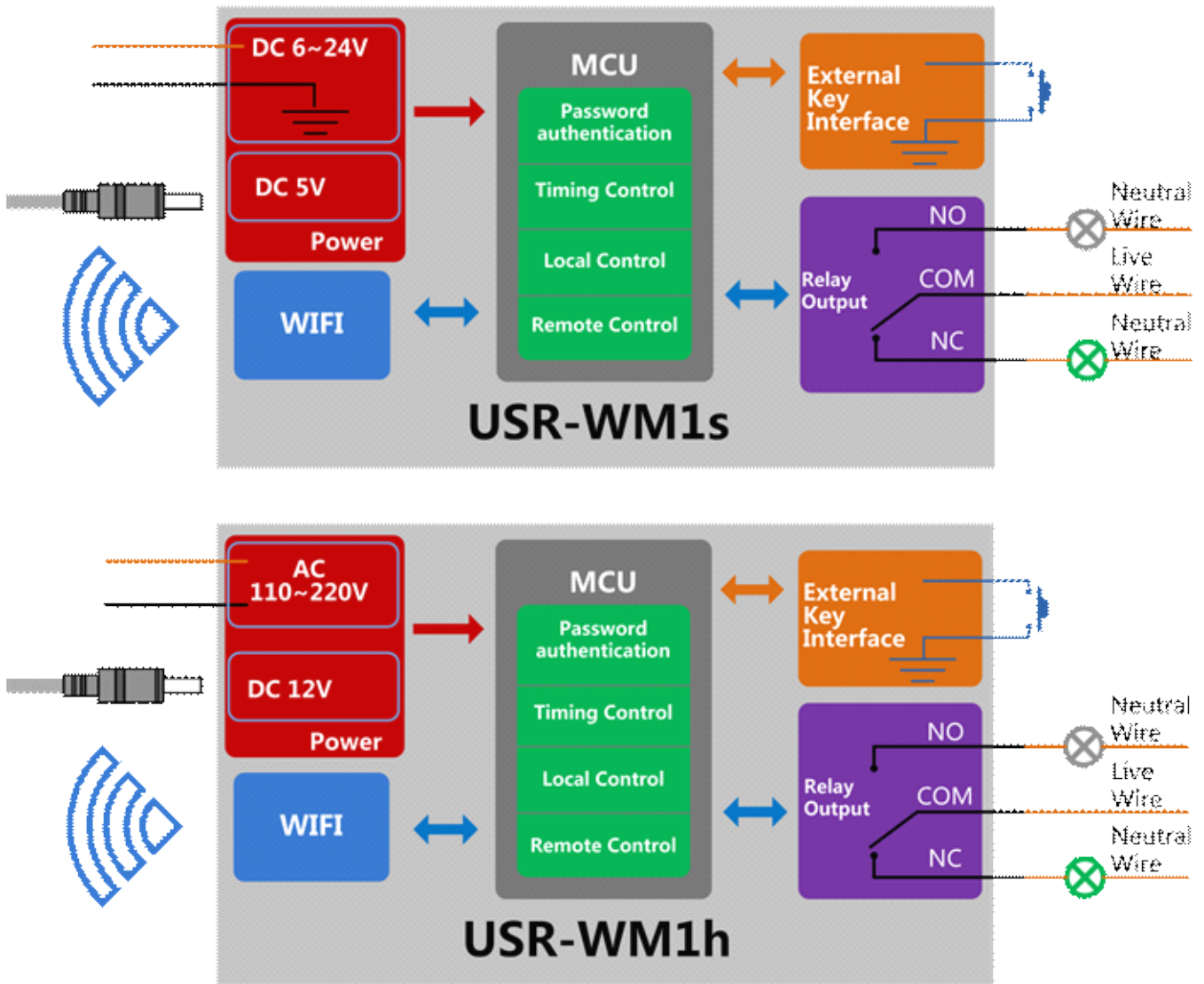


IOS



Android

### 3. Wiring Schematic Drawing



Note:

COM port input voltage are not associated with the internal circuit. User could choose depend on the fact.

Input voltage range:

10A	277VAC/28VDC
12A	125VAC

## 1.1 Direct Connect Control

### 1. Connect Smartphone to USR-WM1's wireless network

Find "USR-WM1" in WLAN, connect to the network, as shown below:



### 2. Open LonHand software

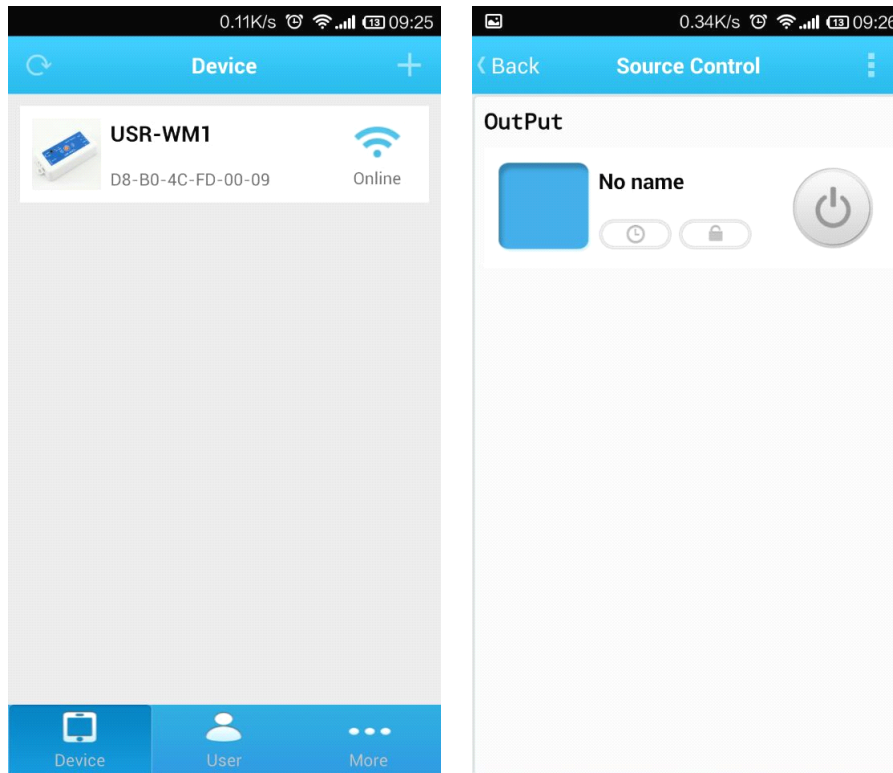
Click the icon to run the software, and click 'Start'.





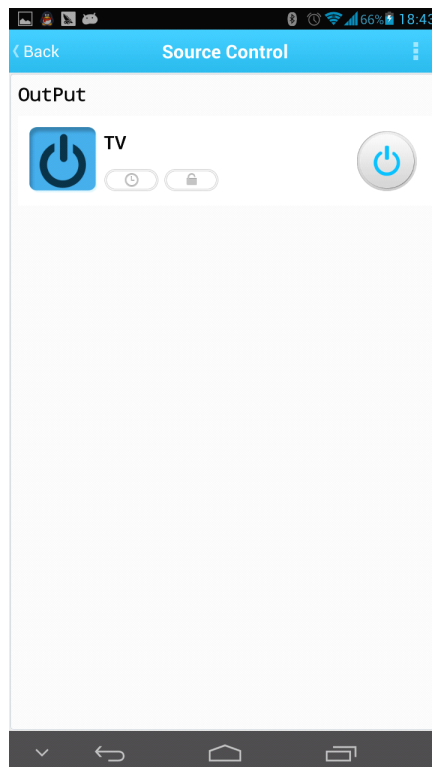
### 3. Control menu

Enter the device list and find USR-WM1, and click it to enter the control menu.



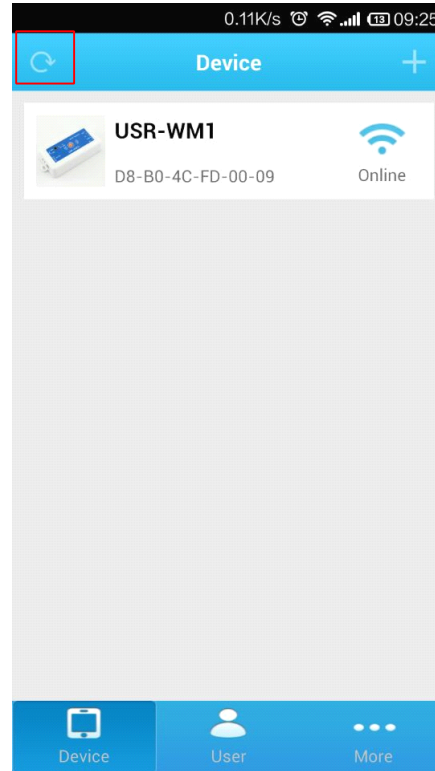
### 4. Control Test

You can click the switch button to control the USR-WM1 now.

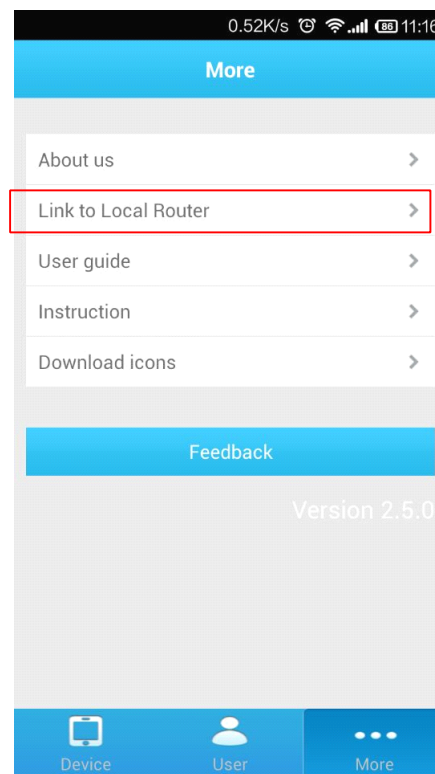
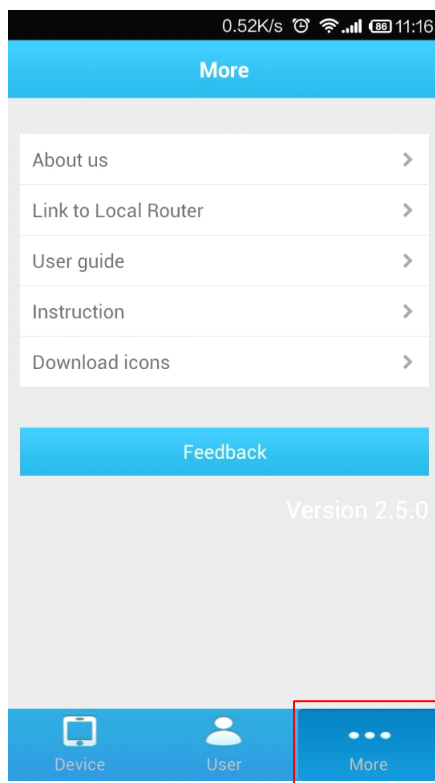


## 1.2 Local Lan Control

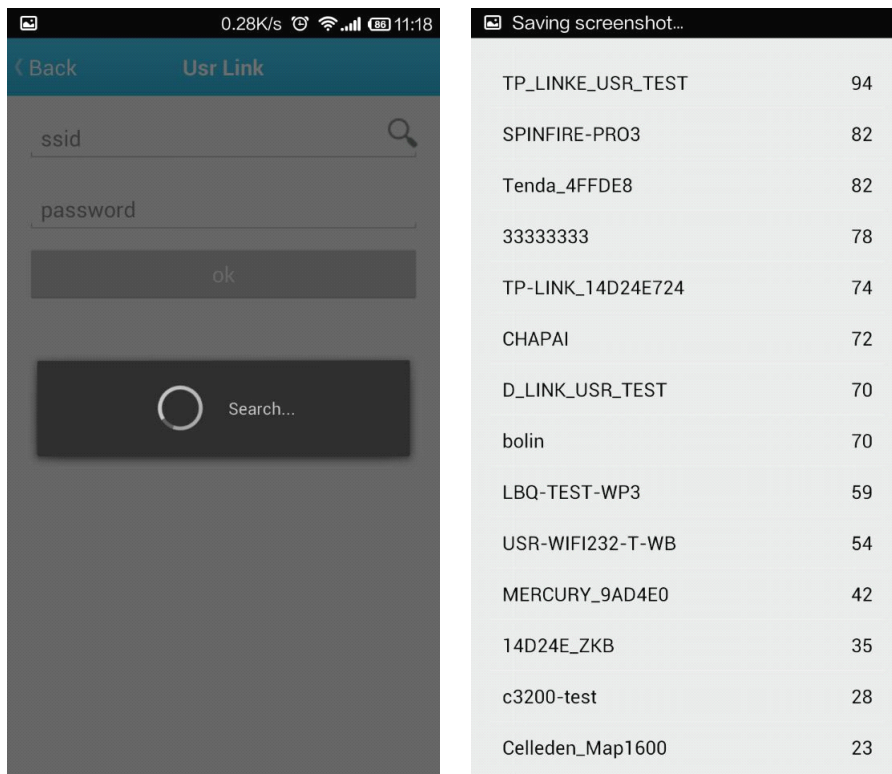
1. Connect Smartphone to USR-WM1's wireless network .  
Open LonHand software, then refresh the device list.



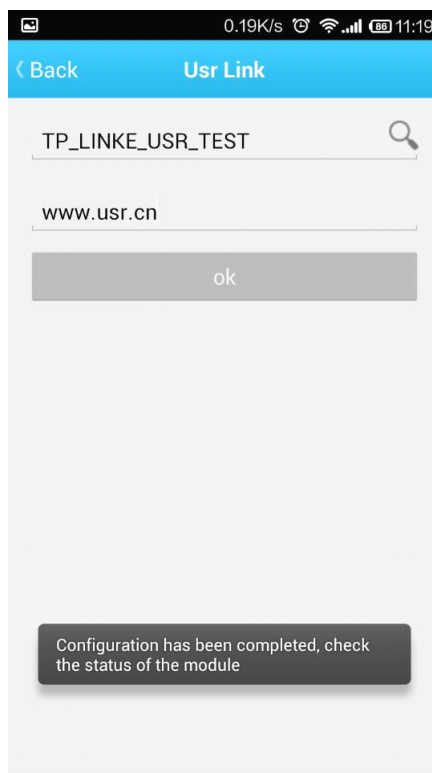
2. Click 'More' form the bottom toolbars.  
Then click "Link to Local Router".



3. Waiting for searching. Then select the router which want to join.

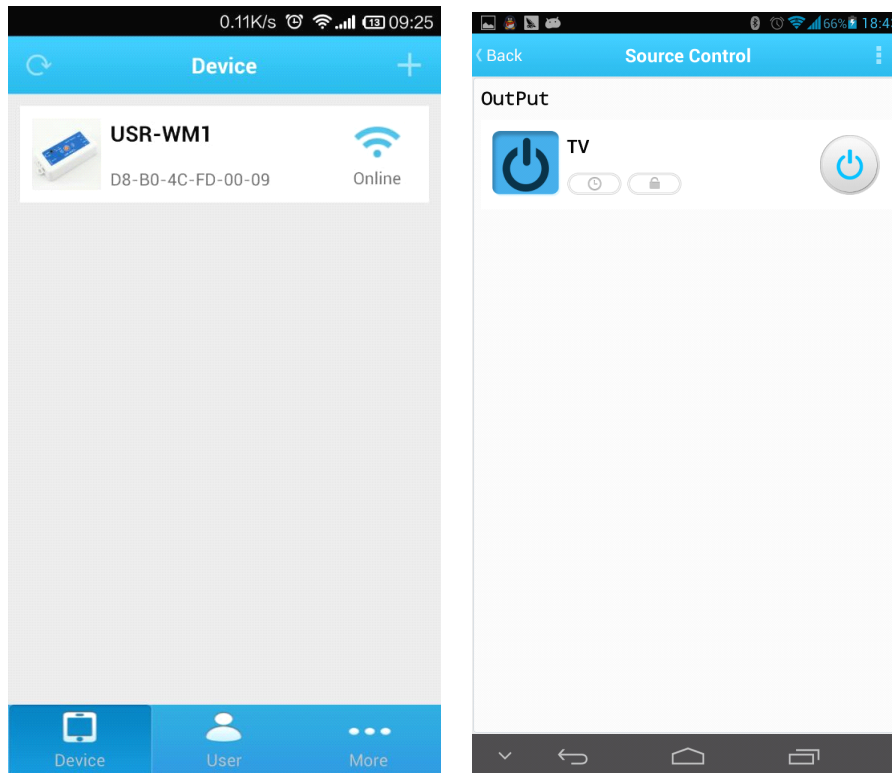


4. Input router passwords, and click “OK”.



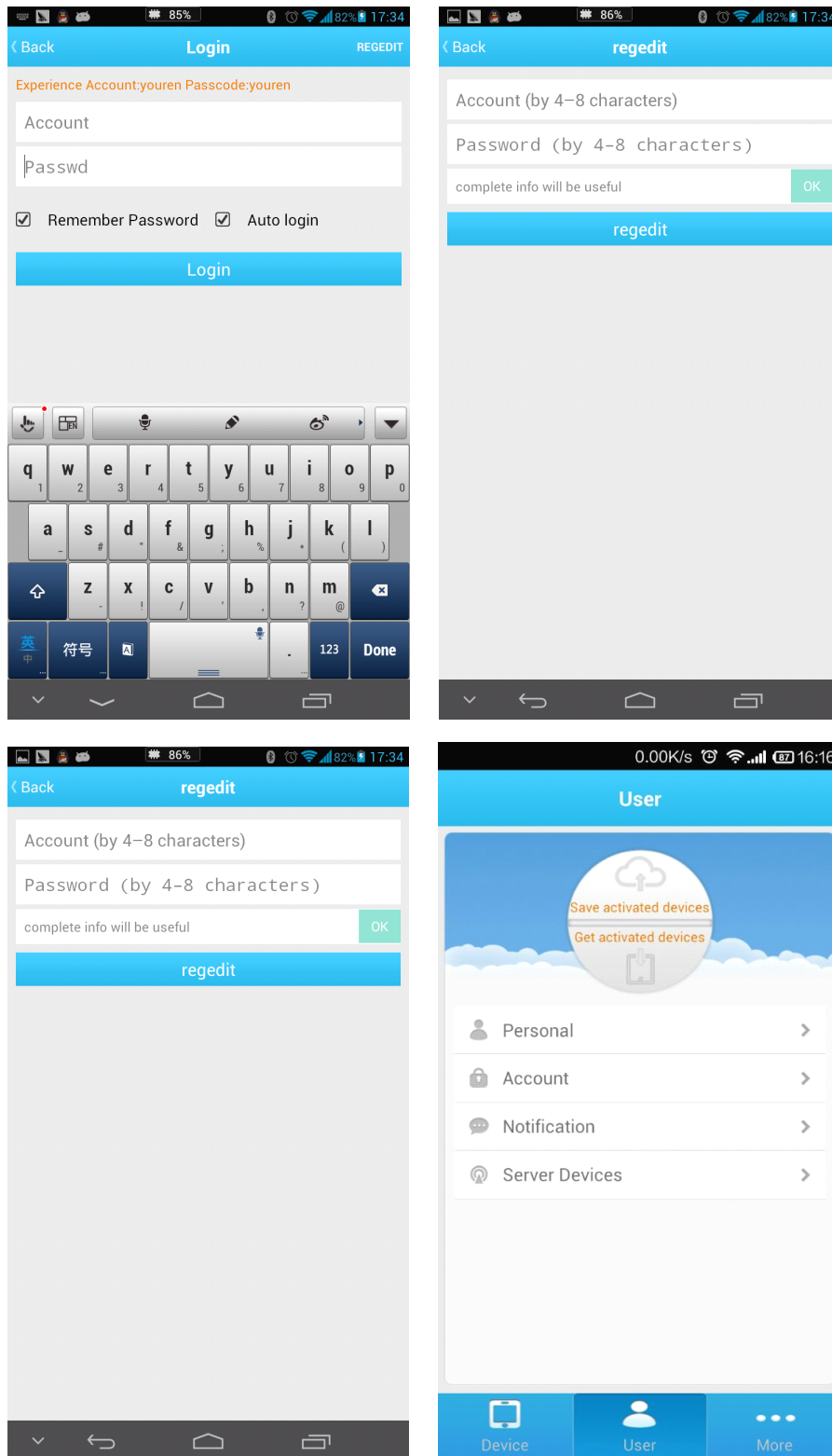


5. WM1 will connect to the router automatically after restart, and the blue indicator will light up. Then You can control the USR-WM1 like direct connect.

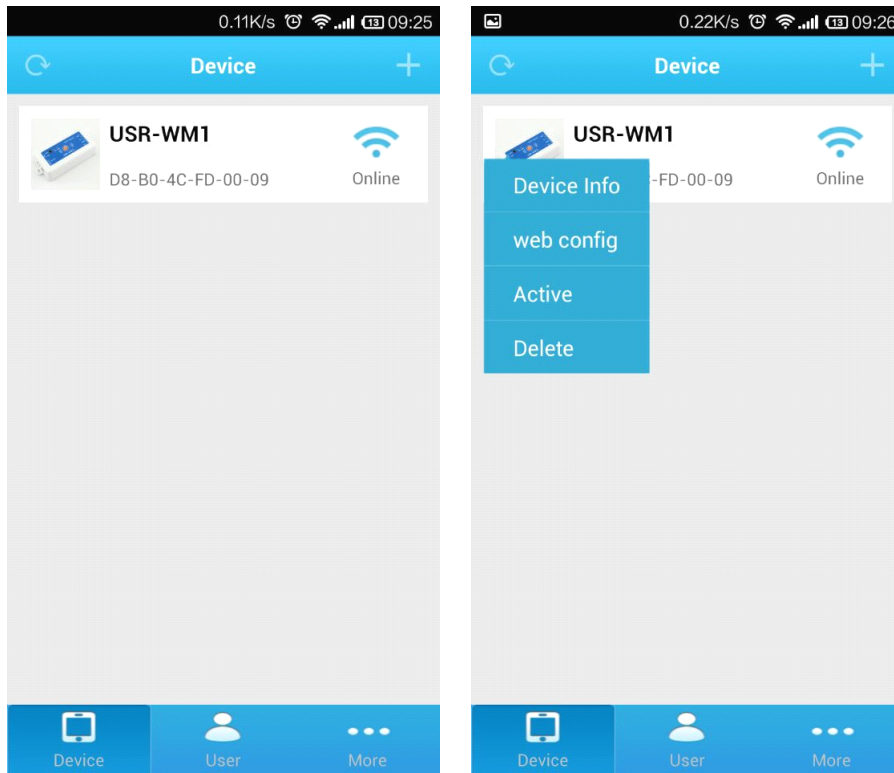


### 1.3 Remote control

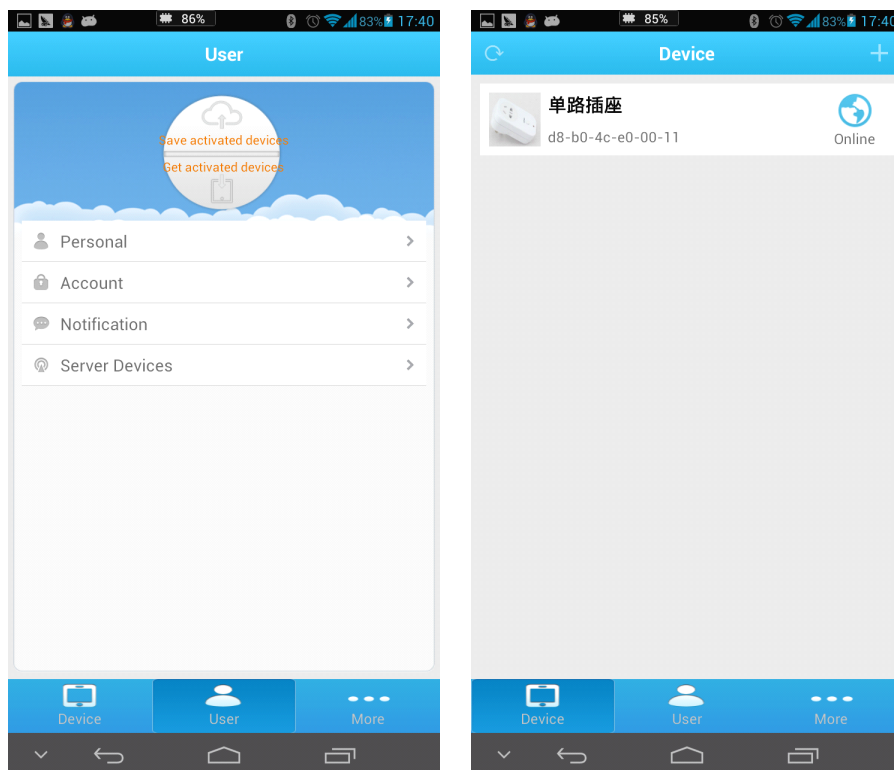
1. Connect WM1 to your router (refer to the above: Chapter 1.2 )then connect your smartphone to it as well.  
Click “User” form the bottom toolbars, then click “REGISTER”, set the account and password, and login in.



2. Return to the device list, and refresh, you can see the USR-WM1 . Press the icon for long time, and click “Active”.



3. A Click “Get activated devices” in the User section.  
Then disconnect the wireless network, change to 2G/3G/Internet, refresh the device list.  
You will see the wifi icon become a remote icon, now you can control it.



## 2 Product Introduction

### 2.1 Product Description

The USR-WM1 whose relays can be switched on or switched off by remote control, is WIFI branch of LonHand series product, and is designed for smart-home application.

LonHand series control terminals are developed for the application in the field of smart home, Internet of Things, industrial controlling and so on. They are suitable for rapid deployment, especially for mobile application because the USR-WM1 can be controlled by your cell phone. They can operate with WIFI connection compared to traditional wired connection. These devices are an ideal choice to realize remote control.

These series product are suitable for household application to build smart home for more comfortable life. Also it can be used in industry and agriculture for low cost, high efficiency in intelligent control of the devices. Users are capable to carry out more effective cost control and gain higher profits, because there's no big change and upgrading of your owned equipment under wireless remote control, users can make full use of your original product without more costs for you.

### 2.2 Product features

- WIFI interface, remote control switch
- Support AP/STA
- Support Usrtlink quick network configuration function
- Support password authentication for safety control
- 1 high current output jack
- 5 timer switch function
- Control software supports five platform: Windows, MAC, IOS, Android, Webpage, you can choose freely

### 2.3 Hardware specifications

USR-WM1 supports 110V/220V two kinds of power input; 1 way power output.

Table.2-1 USR-WM1 Parameter table

Mechanical Dimensions	85*45*23mm (L*W*H)
Working voltage	WM1s : DC 6~24V or DC 5V WM1h: AC 110V/220V 60Hz/50Hz or DC12V
Power consumption	Typical: 2W Max: 3W
Working temperature	-30-85°C
Preservation environment	temperature : -40-85°C Humidity: 5%-95%RH
Maximum output voltage / current	10A 277VAC/28VDC 12A 125VAC

Packing List	USR-WM1*1
--------------	-----------

Table.2-2 Default settings

Network Mode	AP
AP SSID	USR-WM1
AP Password	null
Device Name	USR-WM1
Device Password	admin
Webpage address in AP mode	10.10.100.254
Account / Password of Webpage	Account : admin Password: admin



Picture.4-1 Product graph

## 2.4 Indicator and Key Function Introduction

### A. Indicator light

- Red indicator light: The relay switch indicator in Normal work;  
Indicates the action to execute when Key is long press;
- Blue indicator light: Network connection status indicator.  
It turns bright when the there is network access.

## B. Key:

You can confirm the version # with below excels.

Table.2-1 V1.3

key-press time (S)	Function	Red indicator light
0~3	Relay on-off state transition	Kill bright state transitions
5~10	Reset to defaults	keeps flashing
10~∞	Invalid operation	Restore Factory Defaults

Table.2-2 V1.2

key-press time (S)	Function	Red indicator light
0~3	Relay on-off state transition	Kill bright state transitions
5~10	Function of Smartlink	keeps rapid flashing
10~20	Reset to defaults	Rapid flashing into slow flashing
20~∞	Invalid operation	Restore Factory Defaults

Table.2-3 V1.1

key-press time (S)	Function	Red indicator light
0~3	Relay on-off state transition	Kill bright state transitions
5~10	Function of Smartlink	single flashing
10~15	Function of Smartlink	Double flashing
15~20	Reset to defaults	three times flashing
20~∞	Invalid operation	Restore Factory Defaults

## 2.5 Usrlink Instructions

Usrlink is a fast and simple method to quickly connect the device to router by smartphone, user can complete the device network configuration conveniently.

User must Keep WM1 in the AP mode.

The Usrlink configuration process is as follows:

Pls refer to Chapter 1.2 or Chapter 3.21 to setup.

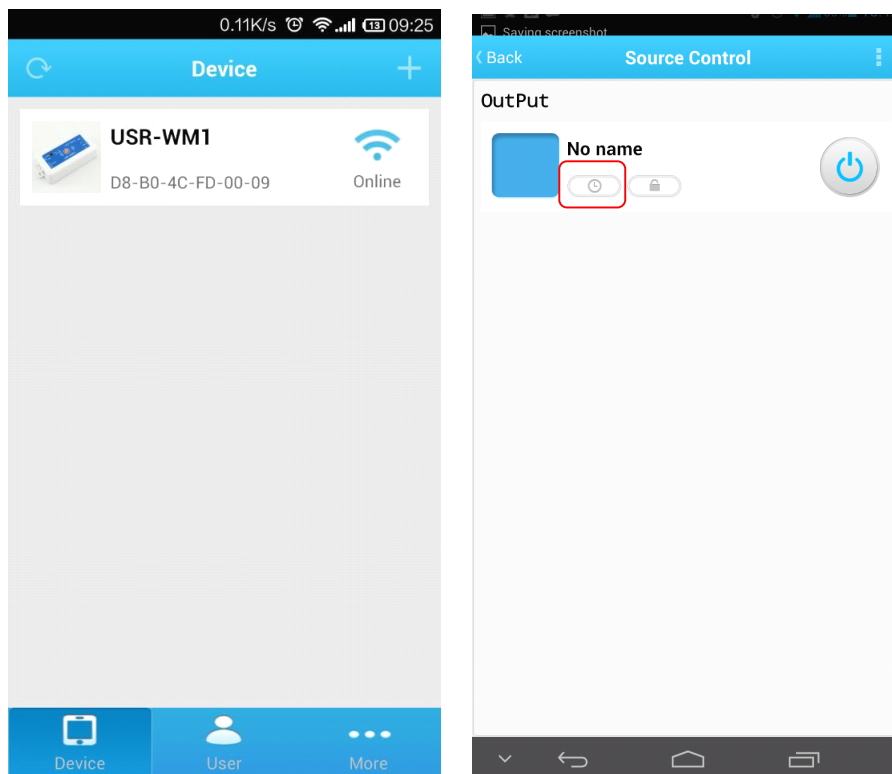
## 2.6 Timing Function Instruction

It support time on and off control.

1. Connect PC or smartphone directly to the device's wifi network or join them into same router.

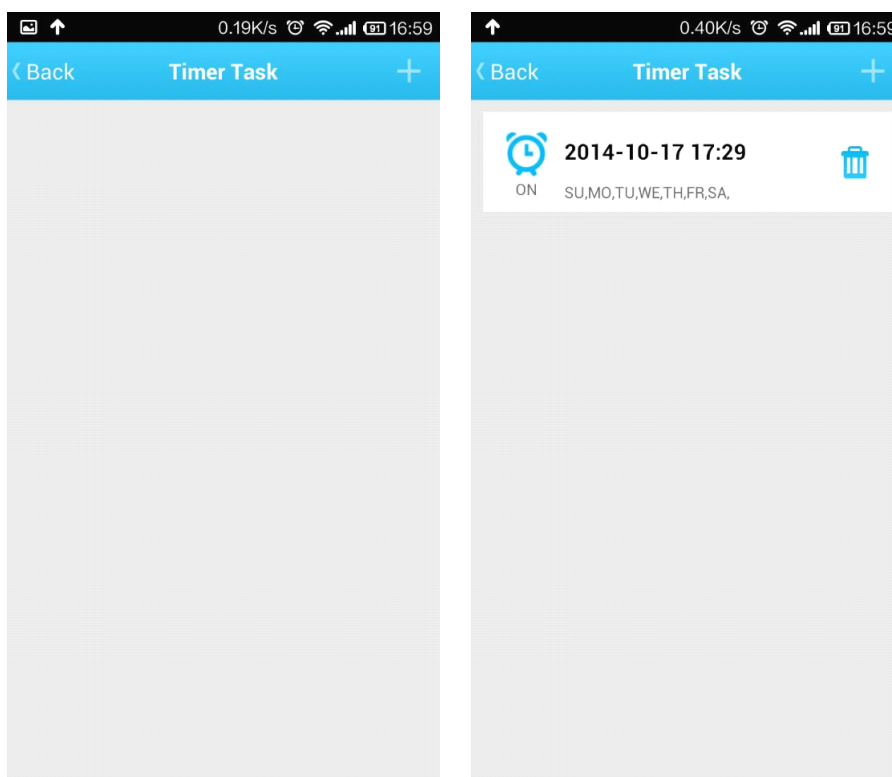
Open Lonhand software, search the device. Then enter the control interface and click the timing button.





Picture.4-2 In to the Timing interface

2.Click the “+” to add your own timing task. The Max is 5 tasks.



Picture.4-3 Add the Timing

## 2.7 Restore Factory Defaults

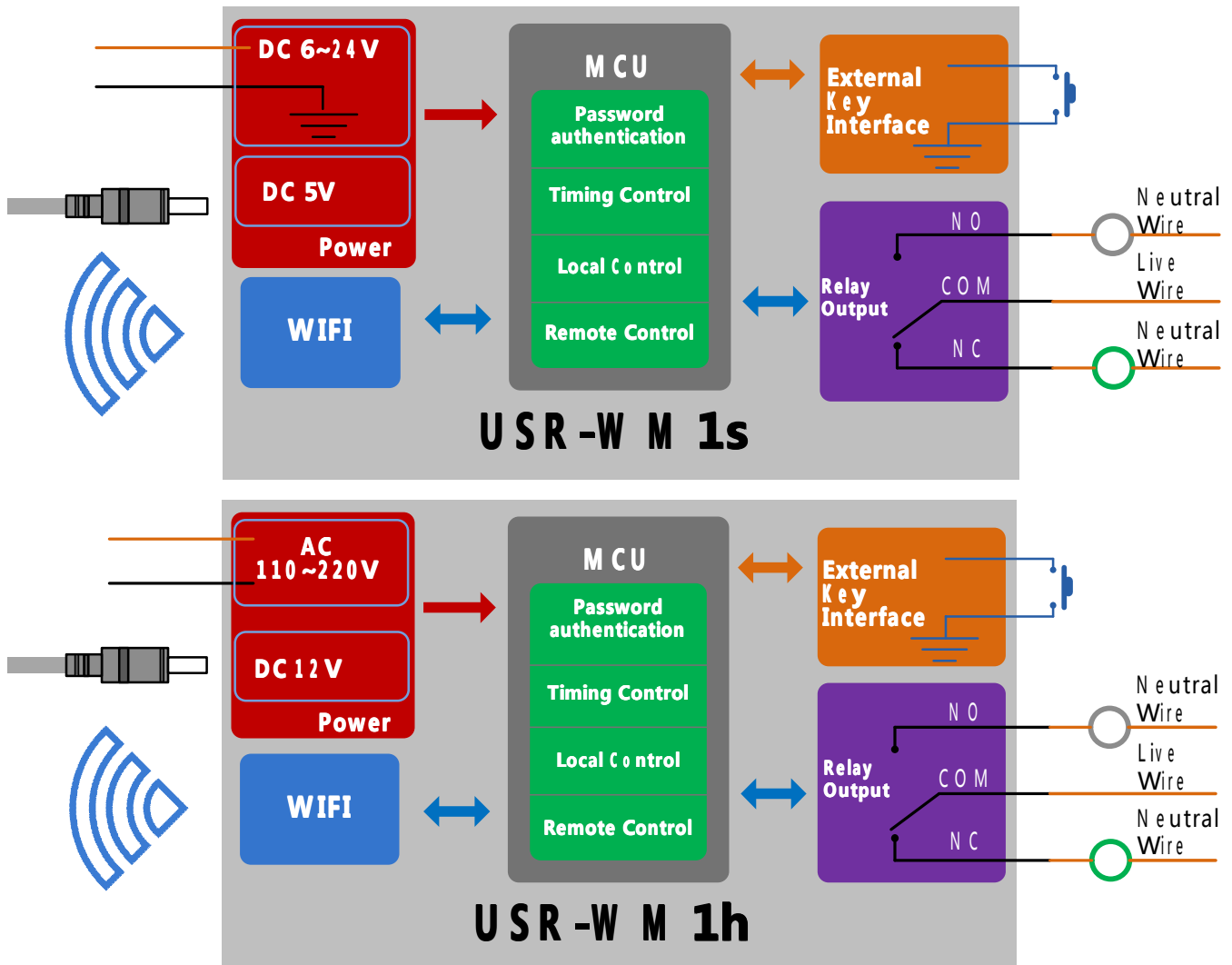
Pls Refer to Chapter 2.4 Indicator light and Key Function Introduction to restore factory defaults.

## 2.8 Wiring Schematic Drawing

As shown below:

- WM1 has multiple power supply specifications:  
 USR-WM1s: DC 5V or DC 6~24V power supply  
 USR-WM1h: DC 12V or AC 110V/220V 60Hz/50Hz power supply
- Relay has normally open and normally closed contacts, users can choose according to their own needs.

Have a external key interface, the functions is same to WM1 built-in button. **When use the WM1h's external key interface, do not touch the external leads, to avoid the risk of electric shock!**



Picture.4-4 Wiring Schematic Drawing

## 3 Directions for Use

### 3.1 Hardware Instructions

USR-WM1 begins to work after power supply for 3~6 seconds. Now you can open or close the socket switch (see product diagram) by the key. Press the key, it's on, press again, it's off.

If the socket is working improperly or you set the wrong parameters, restore factory defaults to start over. As for Restore factory defaults, pls refer to chapter 2.4

### 3.2 Connect the wireless router

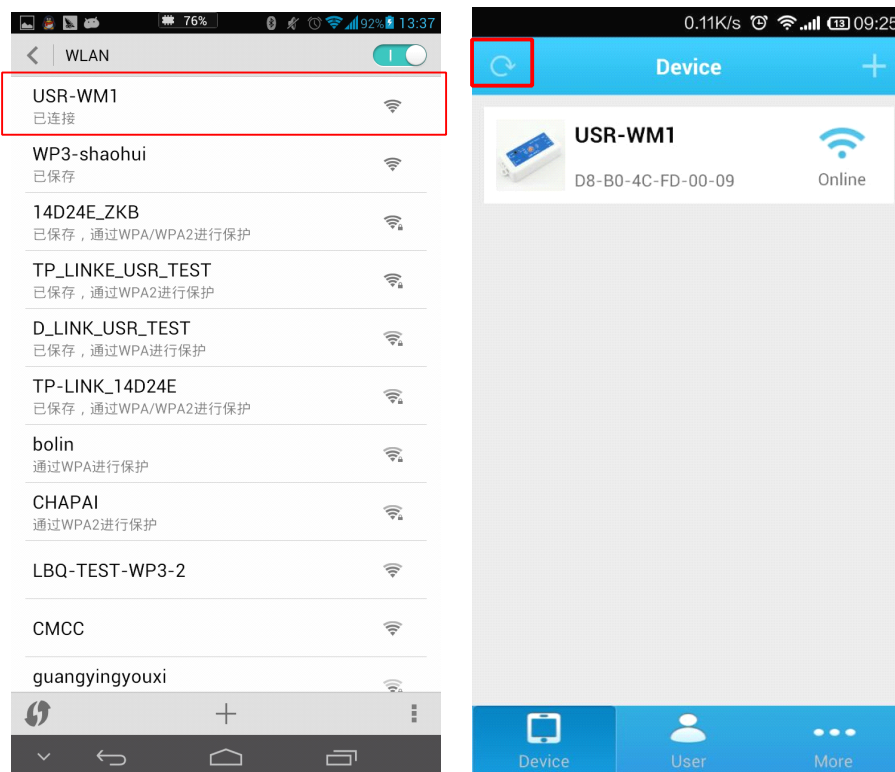
There are 2 ways for network configuration: UsrLink and Webpage Configuration.

Via	Supportive Mode
UsrLink	AP
Webpage Configuration	AP or STA

#### 3.2.1 UsrLinke configuration process

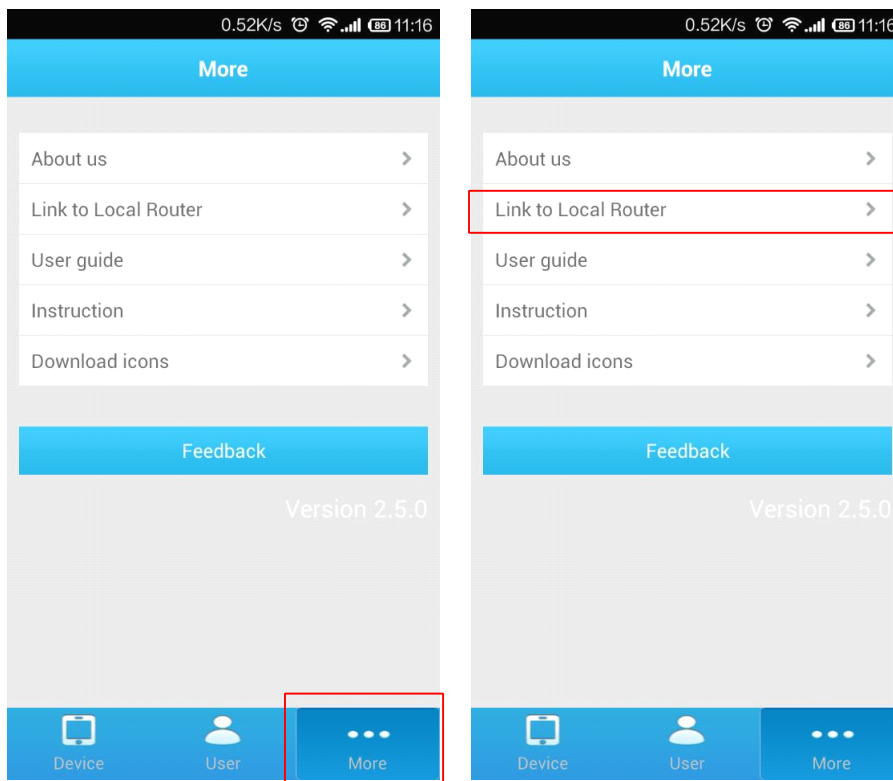
●Connect WM1 to the router via smartphone (Take example with Android version)

1. Open smartphone's settings interface, click to connect USR-WM1.



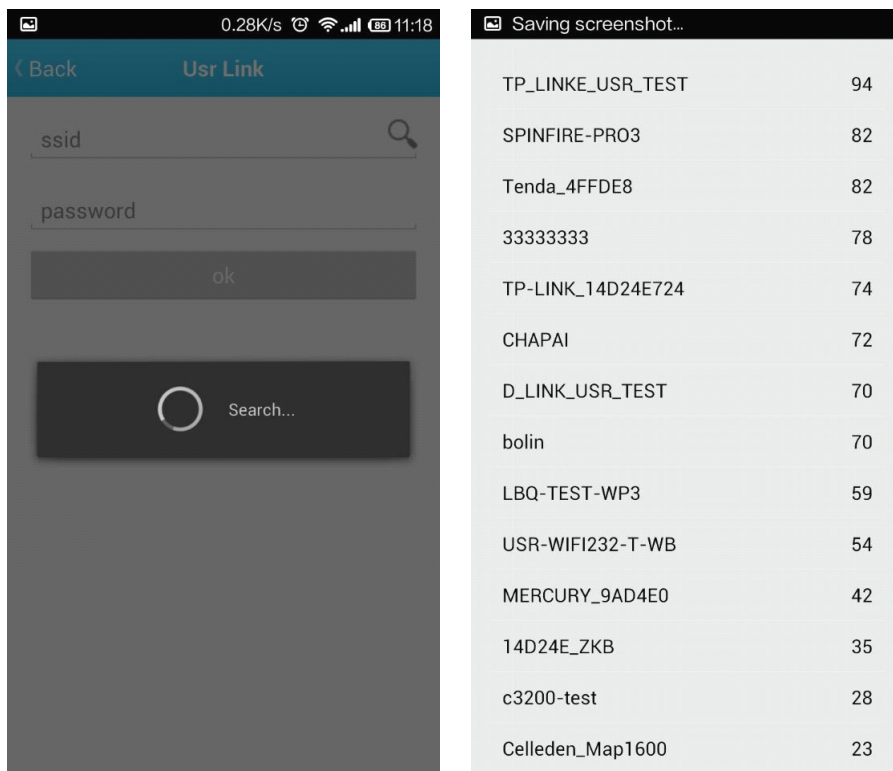
Picture.3-1 Connect to WM1

2. Open Lonhand software, click "More" form the bottom toolbars then click "Link to Local Router".



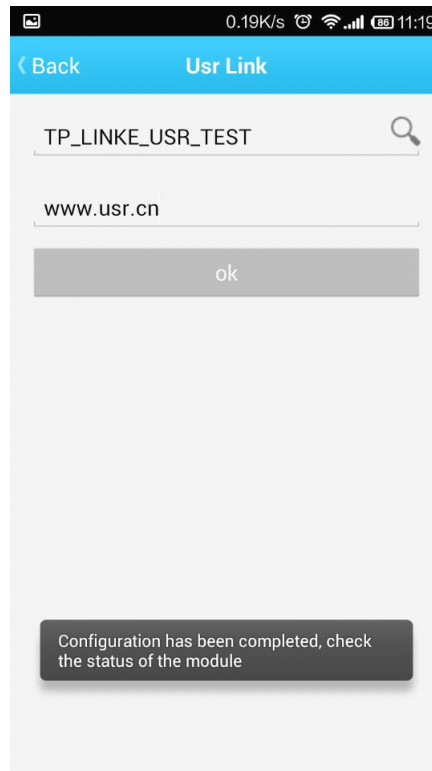
Picture.3-2 Search the Local Router

3. Waiting for searching, select the router which want to connect.



Picture.3-3 Select the Router

4. Input router passwords, save it, and then click OK.

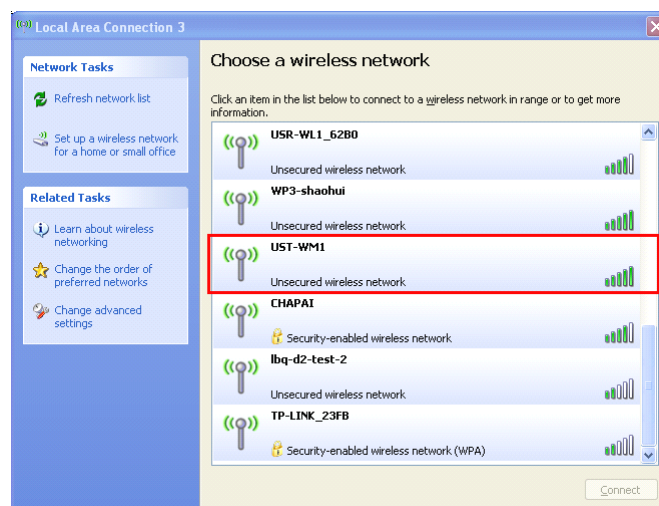


Picture.3-4 Successfully joins the router


5. WM1 will connect to the router automatically after restart, the blue indicator will light up. Then connect Smartphone to the same router. You can control the USR-WM1 like direct connect.

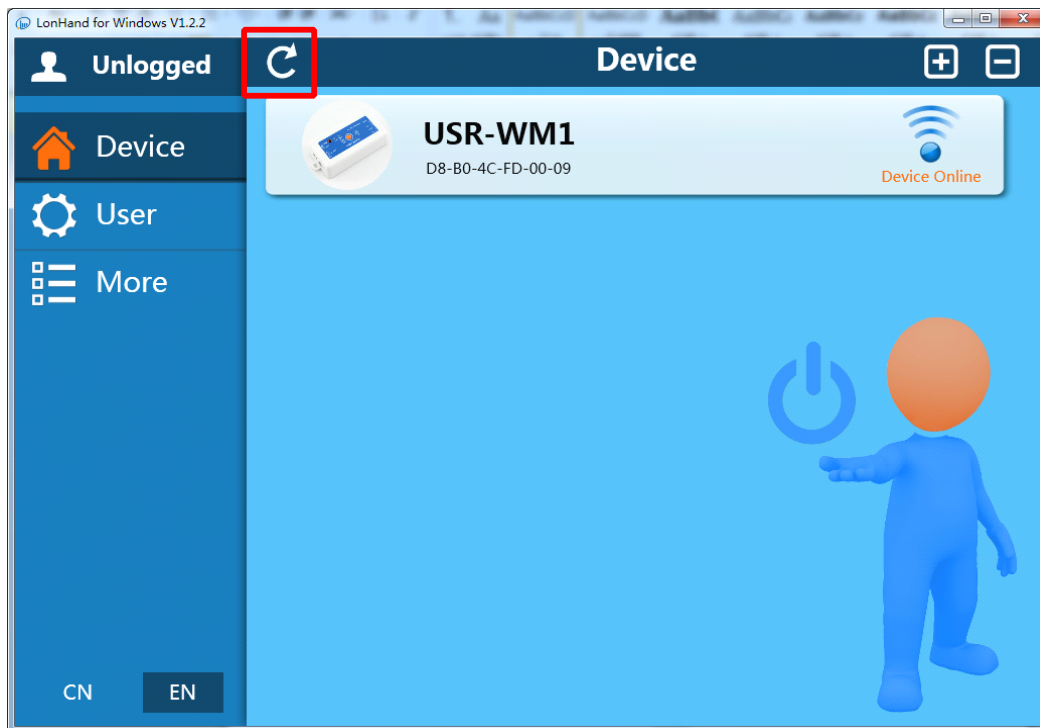
●Windows System Configuration(Take example with XP)

1. Double Click wireless network button from right bottom corner of the desktop. Click “USR-WM1” to connect.



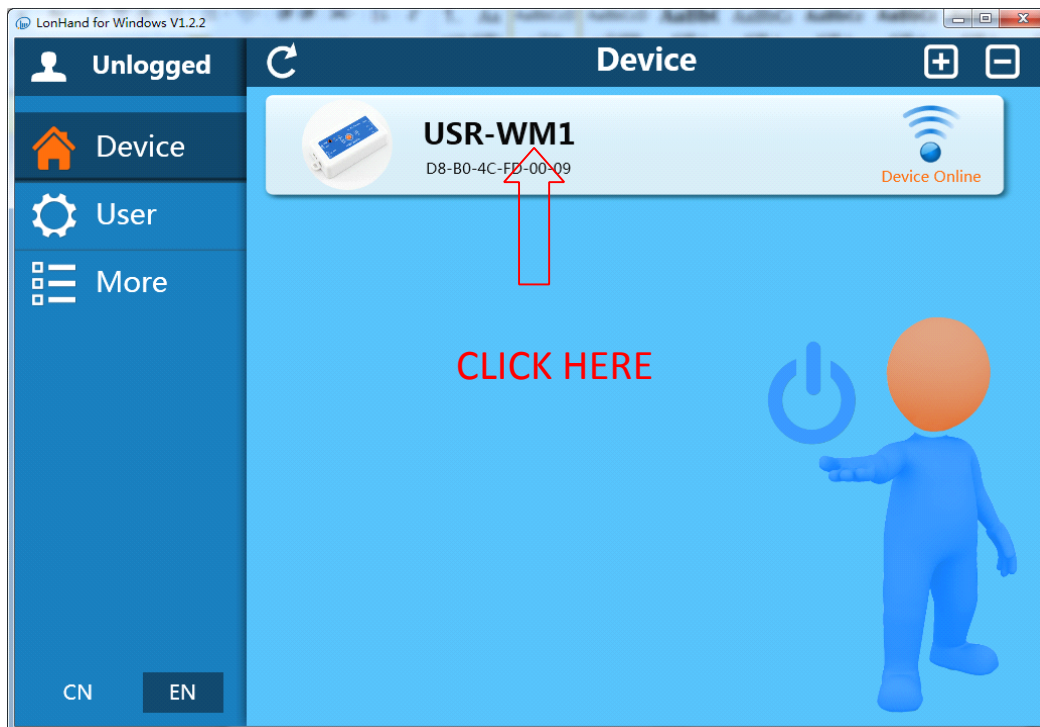
Picture.3-5 Connect to WM1

2. Open LonHand software, then click  to refresh the device list.



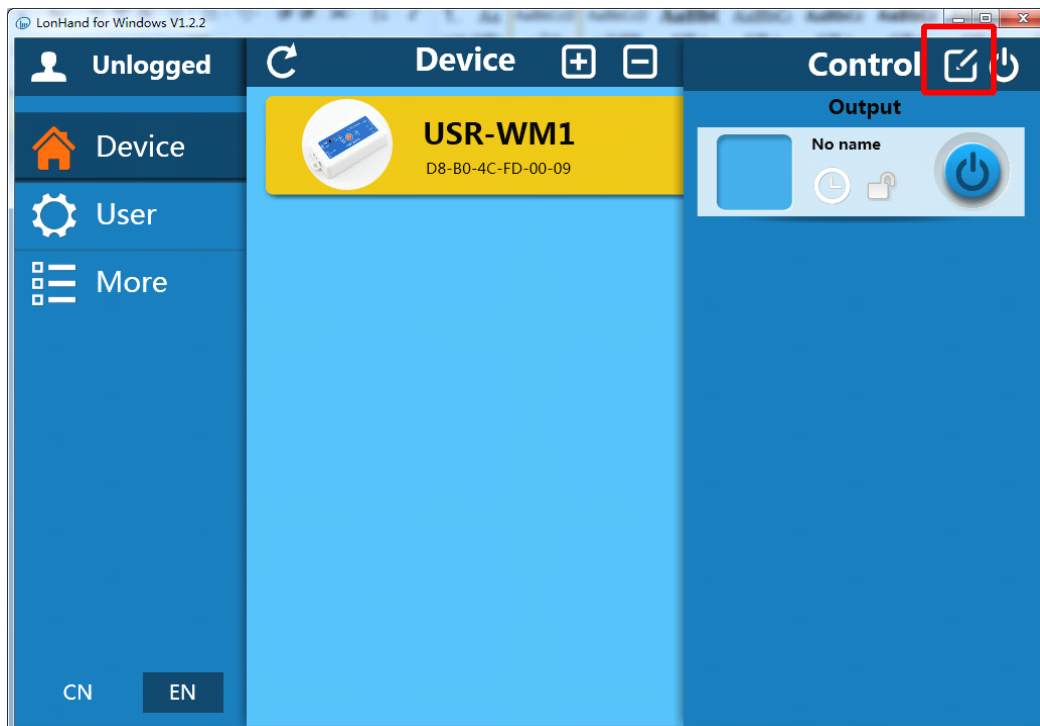
Picture.3-6 Control Interface

3. Click WM1 toolbars. After click Settings button.



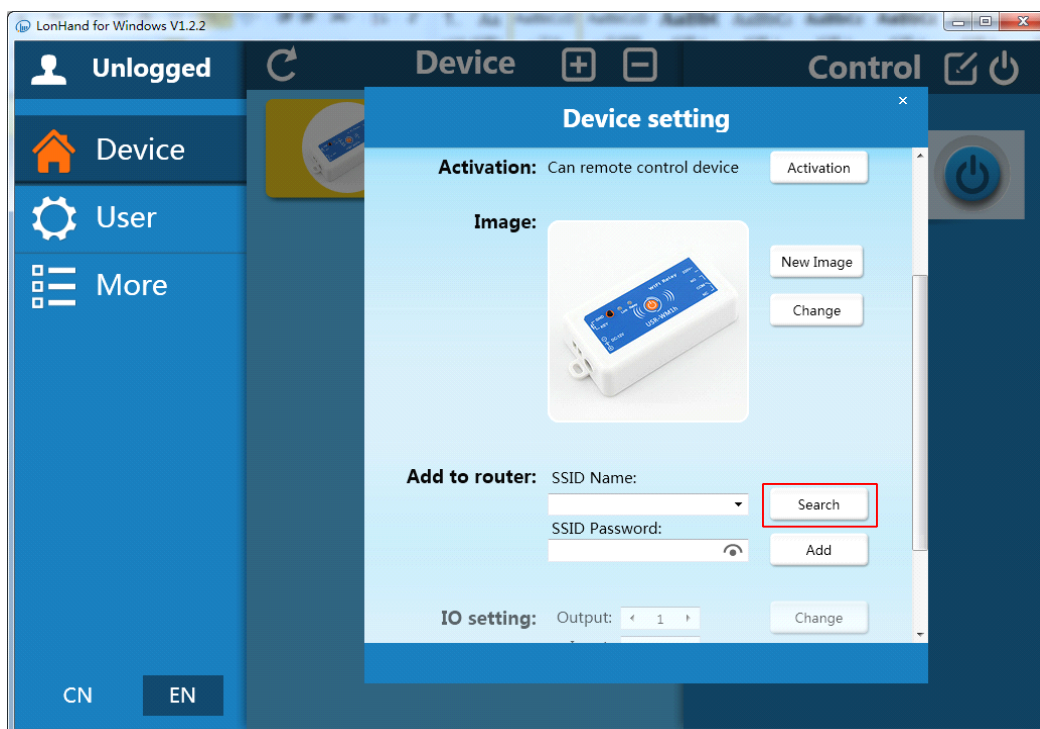
Picture.3-7 In to the search interface 1





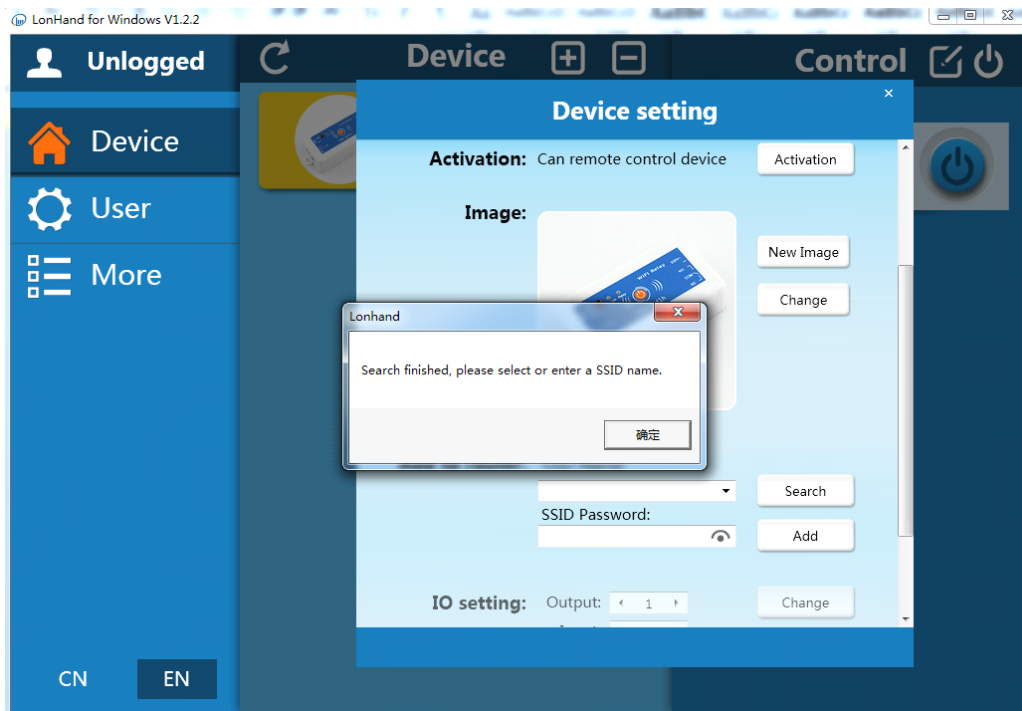
Picture.3-8 In to the search interface 2

4. Pull the scroll bar and click “Search”

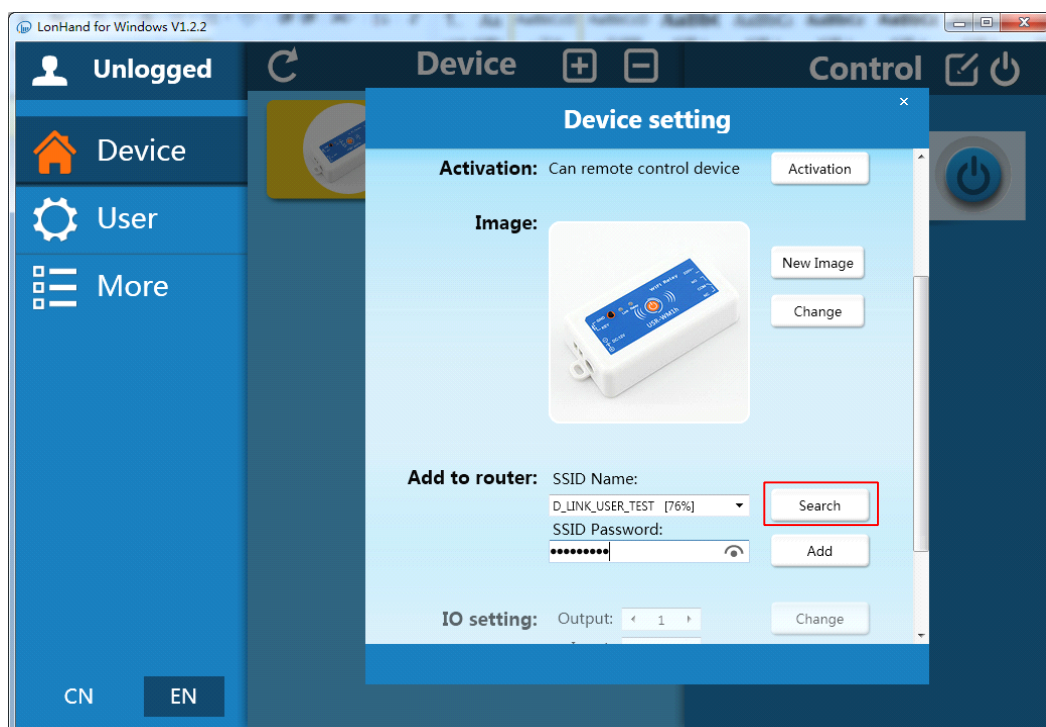


Picture.3-9 In to the search interface 3

5. Waiting for searching. select the router which want to jion. Then input router password, save it, and click Add.



Picture.3-10 In to the search interface 4



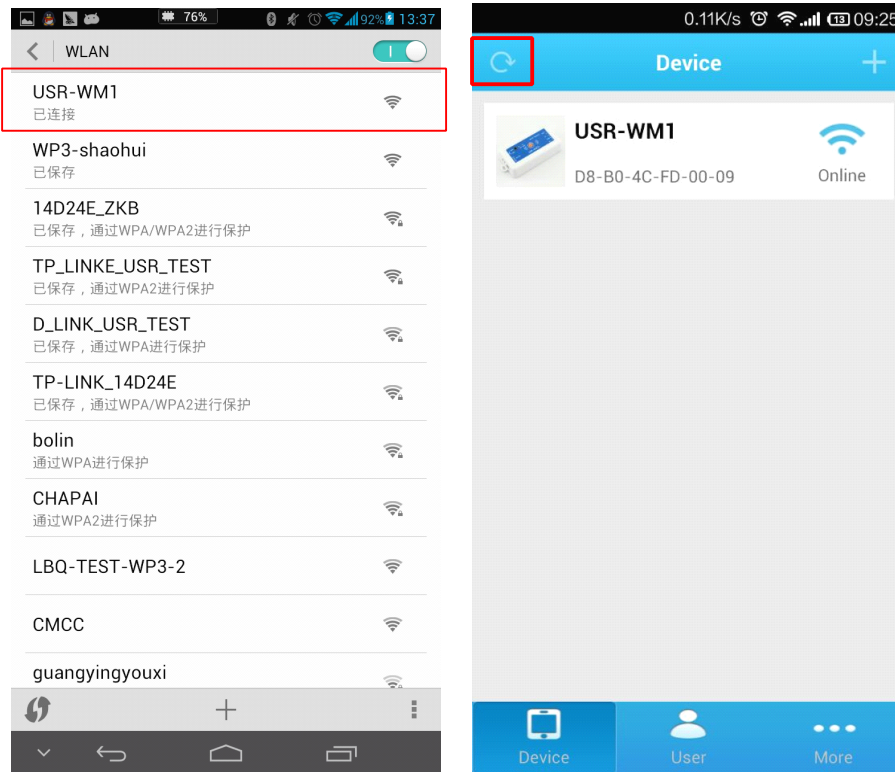
Picture.3-11 Successfully joins the router

6. WM1 will connect to the router automatically after restart, the blue indicator will light up. Then connect Smartphone to the same router. You can control the USR-WM1 like direct connect.

### 3.22 Webpage configuration process

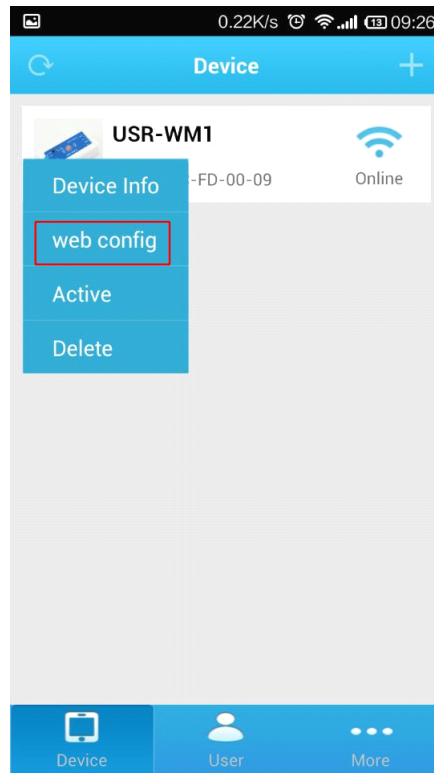
●Connect WM1 to the router via smartphone (Take example with Android version)

1. Open smartphone's settings interface, click to connect USR-WM1.



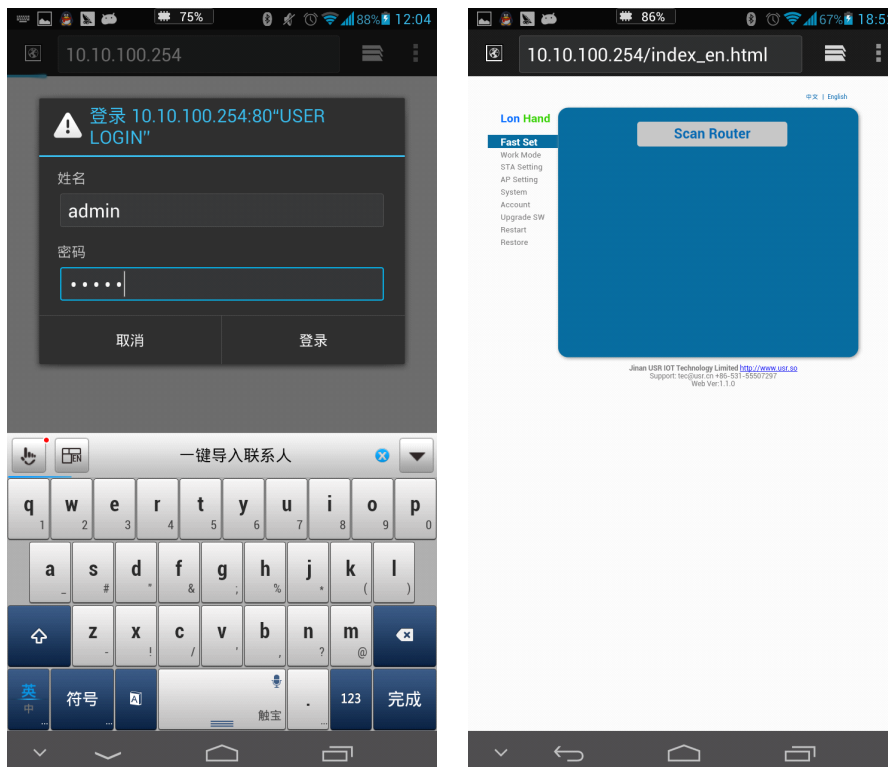
Picture.3-12 Connect to WM1

2. Open LonHand software, refresh the device list.
3. Long press USR-WM1 icon, and clic “web congig”.



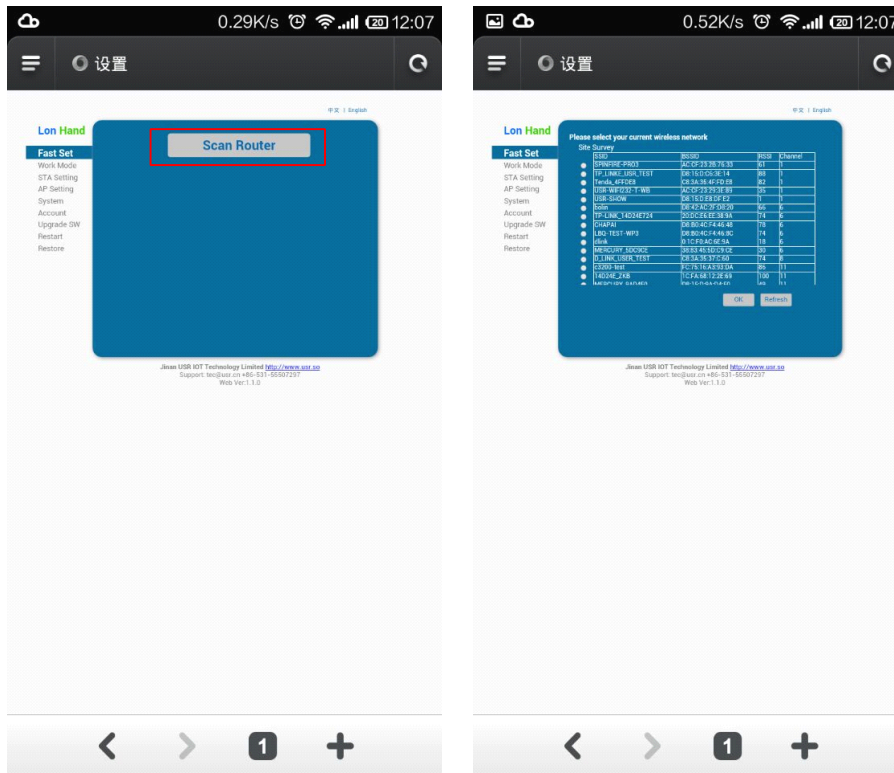
Picture.3-13 In to the search webpage 1

4. In the pop-up window, enter you name (admin) and password (admin) to login, then click the fast setting section. The web Webpage is Chinese by default, click English to translate.



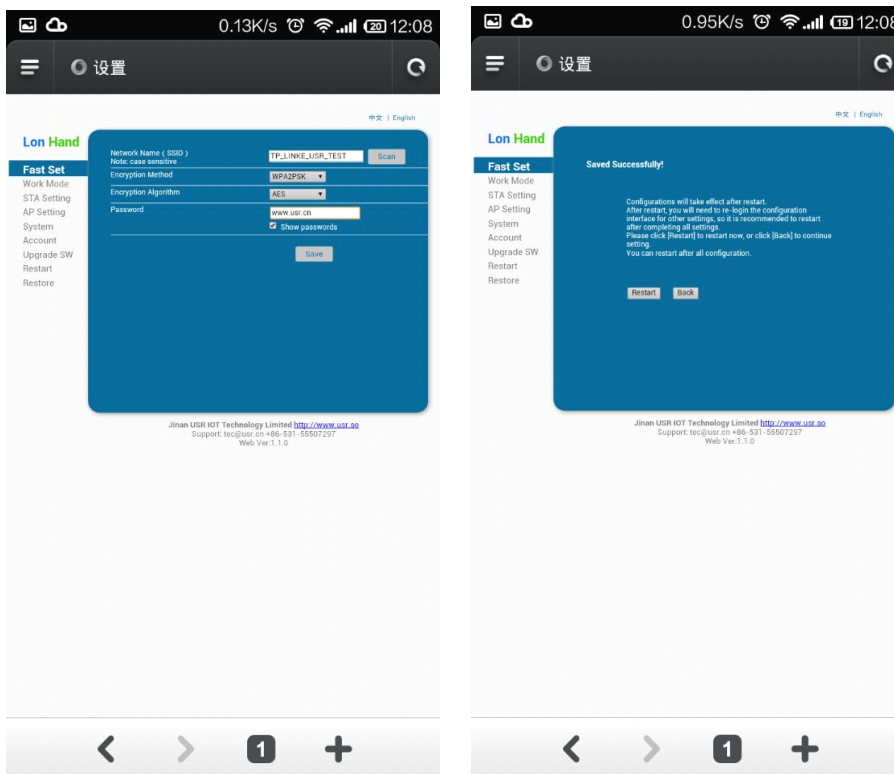
Picture.3-14 In to the search webpage 2

- Click “Scan Router” to get the routers list, then select the router you want to connect, and click “OK”.



Picture.3-15 Webpage configuration process 1

- Input router passwords, save it, and then click OK, after click 'restart'.

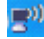


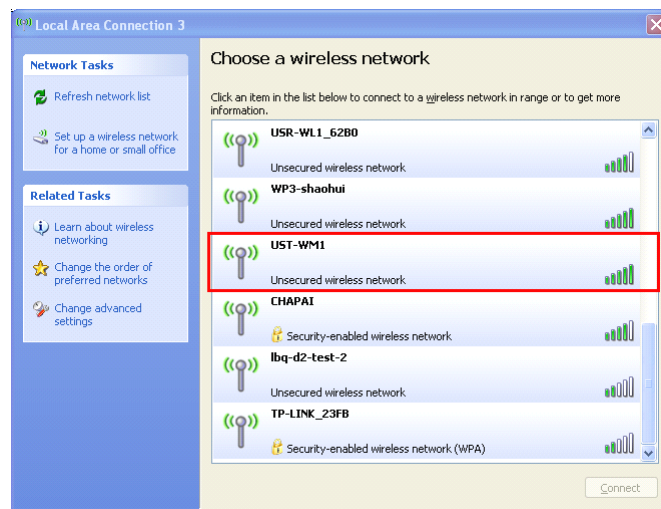
Picture.3-16 Webpage configuration process 2

7. WM1 will connect to the router automatically after restart, the blue indicator will light up. Now you can control WM1 via internet. Regarding to detailed operation,pls refer to the manual of LonHand software..

●Windows System Configuration(Take example with XP)

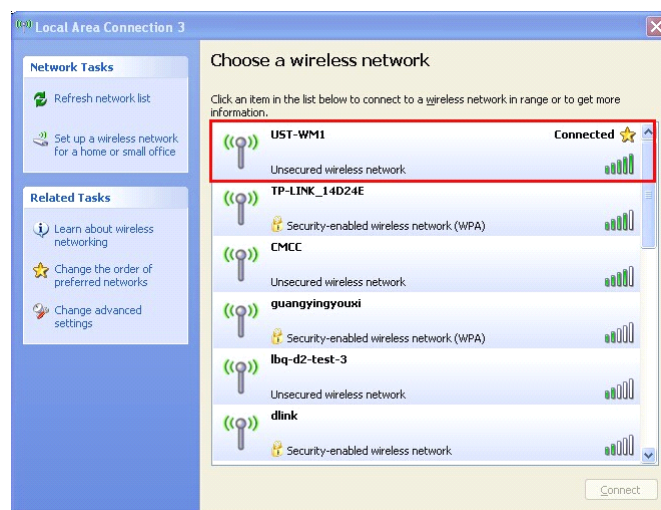
A wireless network card is required for the computer.

1. The WM1’s working mode is AP by default. Double click wireless network button  to get the list after the WM1 work.



Picture.3-17 get wireless list

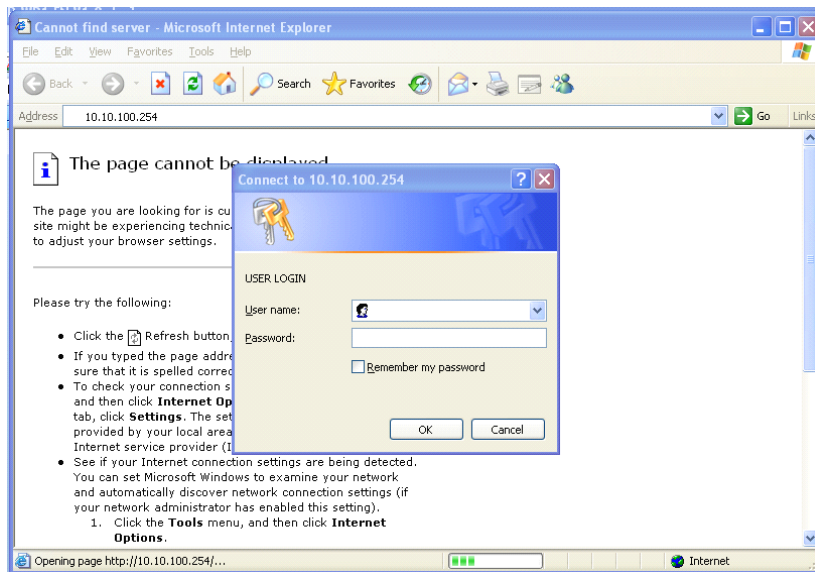
2. Find “USR-WM1” and connect it.



Picture.3-18 Connect to WM1

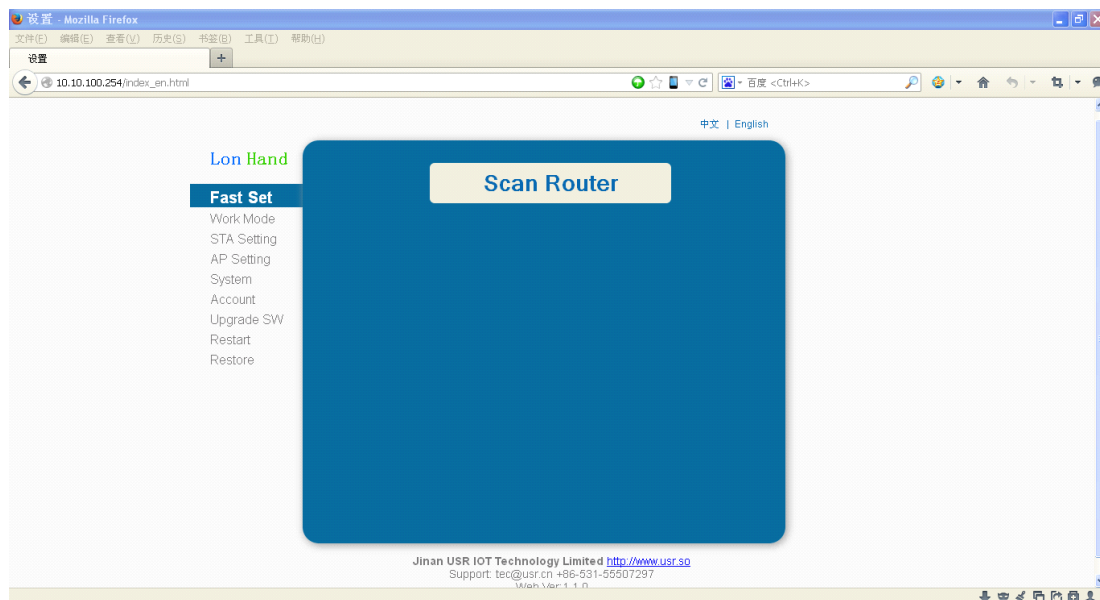
3. Open the Website of WM1,IP address: 10.10.100.254.





Picture.3-19 Login the web

4. Input the account and password, default: admin,admin.



Picture.3-20 Enter the web

Picture.3-21 The follow steps is similar to computer,you can refer to smartphone steps.

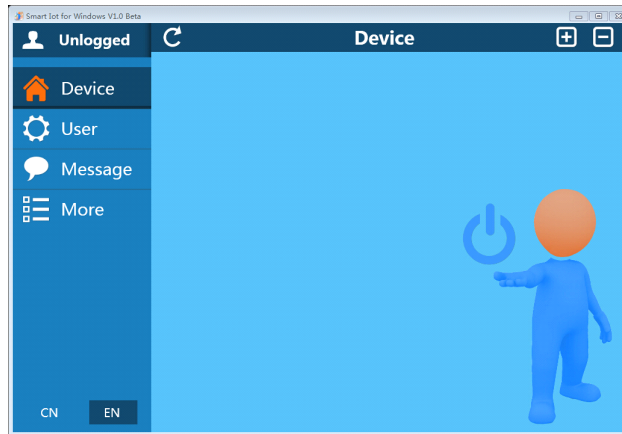
Picture.3-22 For more detailed operation, pls refer to the manual of LonHand.

## 4 LonHand of Windows Introduction

The computer and USR-WM1 socket need to connect to the same router.

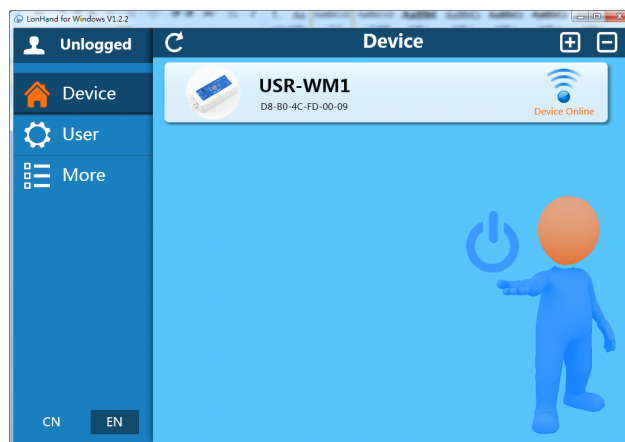
The detailed operation please refer to the manual of LonHand.

1. Open the LonHand software



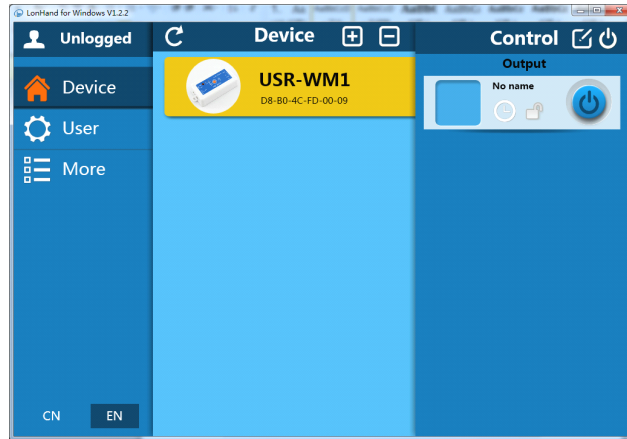
Picture.4-1 LonHand interface

2. The software will search WM1 automatically. If you don't see WM1 in software, please click . Then you can see the information as following.  
If the WIFI symbol is gray, it means WM1 is not connected to computer. If the WIFI logo is blue, it means connected.



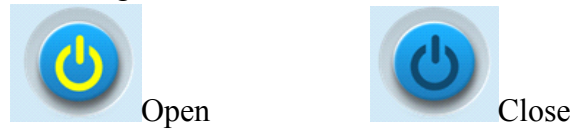
Picture.4-2 Device list

3. Click WM1, enter into control menu.

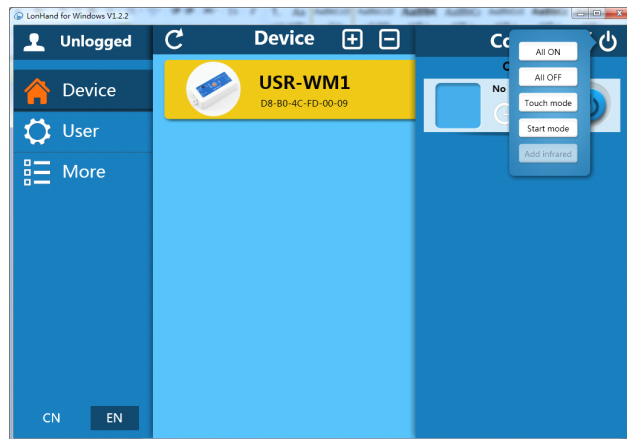


Picture.4-3 control menu

The control menu displays the control button, which is close by default. You can click the button to control socket as shown in the diagram. Also the button will indicate according to the socket state.



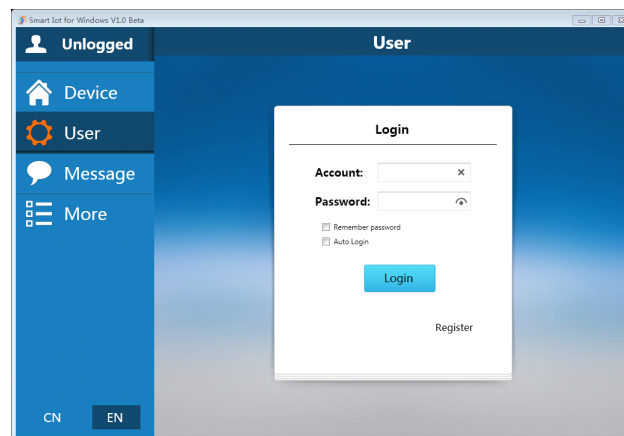
4. you can also set WM1 all open or closed by the upper right button , the interface is as follows:



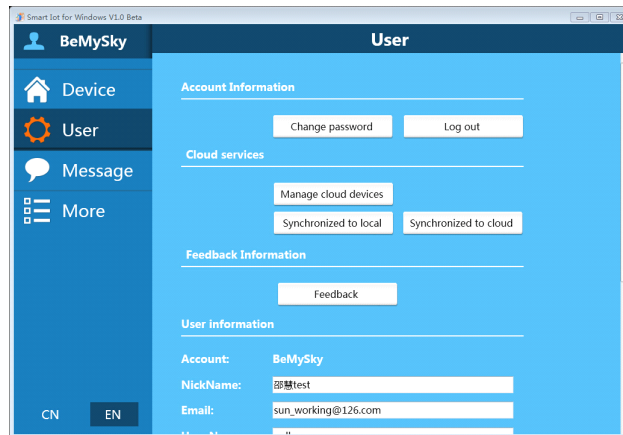
Picture.4-4 all on/off

## 5. Remote control

First,you need to register a user account (account number and the password 4-8 characters, can be numbers, letters, combination of numbers and letters, case sensitive),and then login.



Picture.4-5 User menu interface

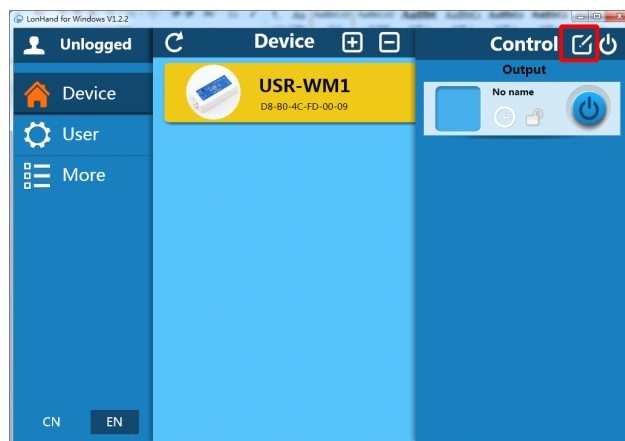


Picture.4-6 remote account management interface

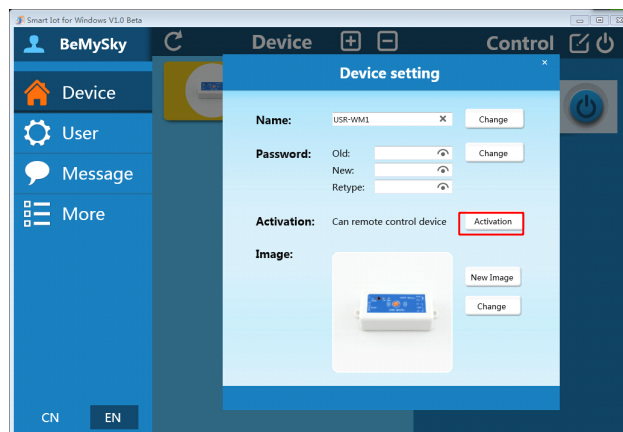
## 6. Active WM1

Refresh the device list, and find USR-WM1. Click , then click “active”.

Click “Synchronized to local”, refresh the device list, you will see the device icon into a remote icon, then you can control the devices via internet.



Picture.4-7 Active interface



Picture.4-8 Active device



Picture.4-9 Remote control

Mobile phone remote control refer to the first chapter or the manual of LonHand.

## Contact Information

---

Company: Jinan USR IOT Technology Limited  
Address: 1-728, Huizhan Guoji Cheng, Gaoxin Qu, Jinan, Shandong, China  
Tel: 86-531-55507297 86-531-88826739-803  
Web: <http://en.usr.cn>  
Email: [sales@usr.cn](mailto:sales@usr.cn), [order@usr.cn](mailto:order@usr.cn)

---

## Disclaimer

This document provides information about USR-WM1, this document does not grant any license to intellectual property rights. Except the responsibility declared in the product sale clause, USR does not assume any other responsibilities. In addition, USR does not make any warranties for the sale and use of this product, including the suitability of the product for a particular purpose, merchantability or fitness for any patent, copyright or other intellectual property infringement, etc. USR may make changes to specifications and product descriptions without notice.

## Update History

- V 1.0 06-30-2014 First Version
- V 1.1 07-08-2014 Update the product characteristics
- V 1.2 07-25-2014 Update product power supply information, add safety tips of external key
- V 1.3.1 10-17-2014 updated UsrLink and Indicator light and Key function.

**<END>**